

Step 1

Remove ariel & mark holes in roof rails;

Holes need to be drilled in the roof rails in order to attached the platform rack mounting brackets. Using the provided mounting bracket diagram for bracket locations, use the brackets to mark positions on the underside of the roof rails. (Predator brackets towards the front of vehicle)

Important – brackets must be 10mm from the edge of bracket, and the edge of the roof rail mounting, marked in blue in the image.



The same applies for the rear brackets.



Step 2

Remove the protective caps from the top of the roof rails, then undo the roof rails by removing the Torx fittings. *Caution, internal fixing plates will now be loose – lift one end of rail at a time and remove before fully removing the roof rail.* Drill 7mm holes in your marked locations, this should be 4 holes per roof bar. (Pilot hole & check is advised before 7mm hole is drilled)

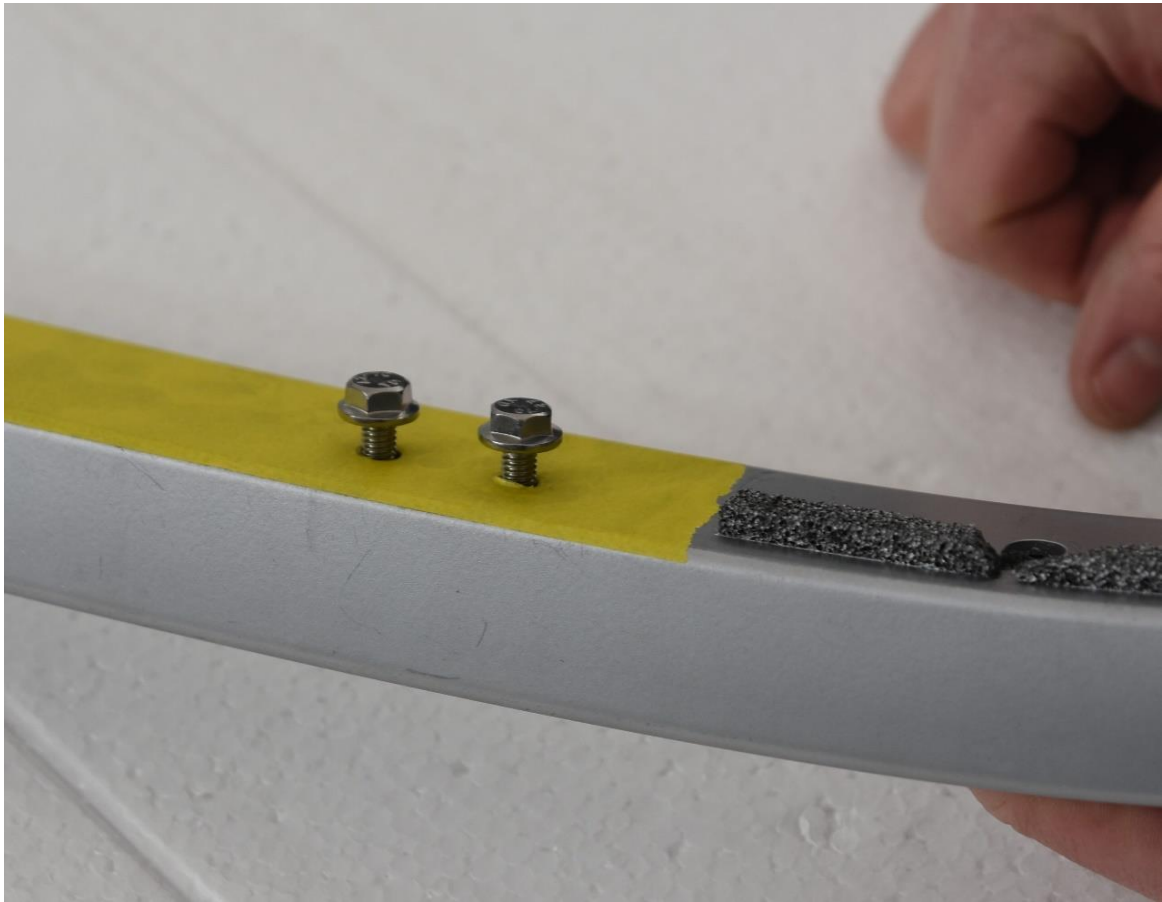
Step 3

Insert the fixing plate (*Item 6 on fitting kit diagram*) inside the roof rail.



Place your forefinger through the access hole in the top of roof rail, push fixing plate against bottom of rail & align threads so that fittings can be screwed through the 7mm holes and into the fixing plate. (Threadlocker advised on these fittings)





Step 4

Fit mounting brackets to roof rails, only tighten the fittings slightly, so that brackets can slide along the slotted holes for adjustment.



Step 5

Re-fit the roof rails in the same way they were removed. *(Remember to re-insert OEM fixing plates before placing rails back into position)*



Step 6

Place platform rack upside down on an even protected surface. Insert T-slot bolts into recess where the plastic joining piece joins the rack together (length ways).

Insert on a 45° angle and then push down to insert. T-slot bolt will now slide in either direction.



Slide T-slot bolts within the recessed channel to be roughly in position where mounting brackets will fix. This is – 4 T-slots per side – 2 towards the front on either side and 2 towards the rear on either side.



Step 7 – Minimum 2 Persons Required

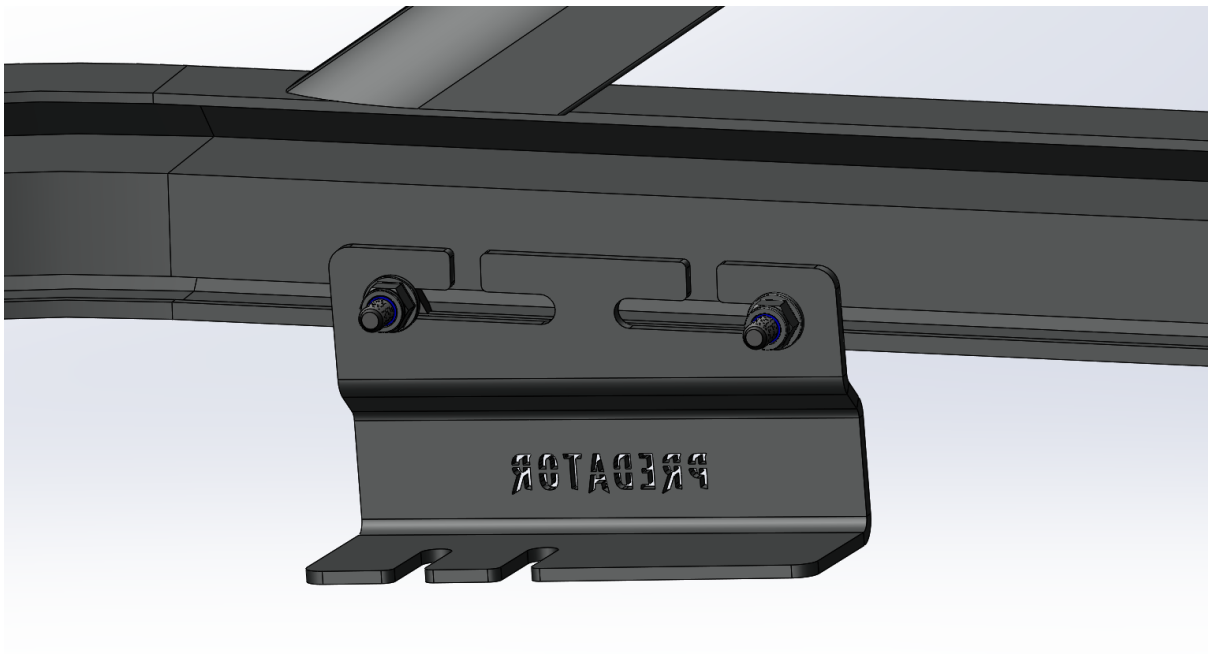
Lower the platform rack onto the mounting brackets. *(Note – the Platform rack has a 'Predator' logo on the front)*

Lower the rack down so that T-slot bolts slide within the slots located on the top of the mounting brackets.





Once lowered, slide T-Slot bolts to either side of bracket and fit nuts (Don't fully tighten at this stage) Repeat for each mounting bracket.



Step 8

Position platform rack into final desired position, (rack will move from side to side and front to back) and tighten all fixtures and fittings.

Please note – if you wish to re fit OEM ariel, a hole is required to be drilled in the platform rack to allow for this.

